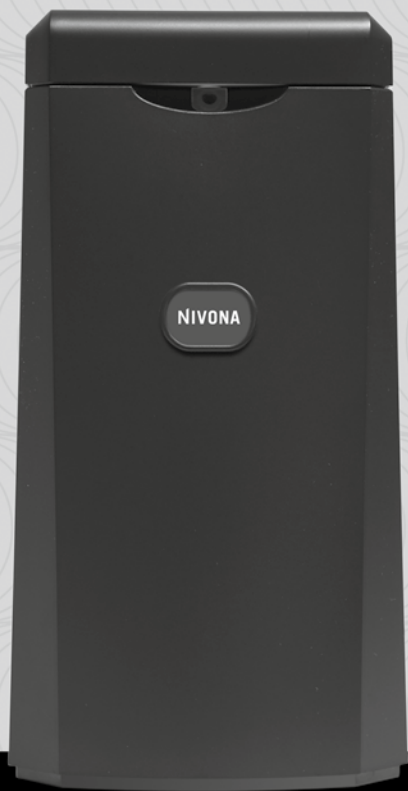


NIVONA Cooler

NICO100

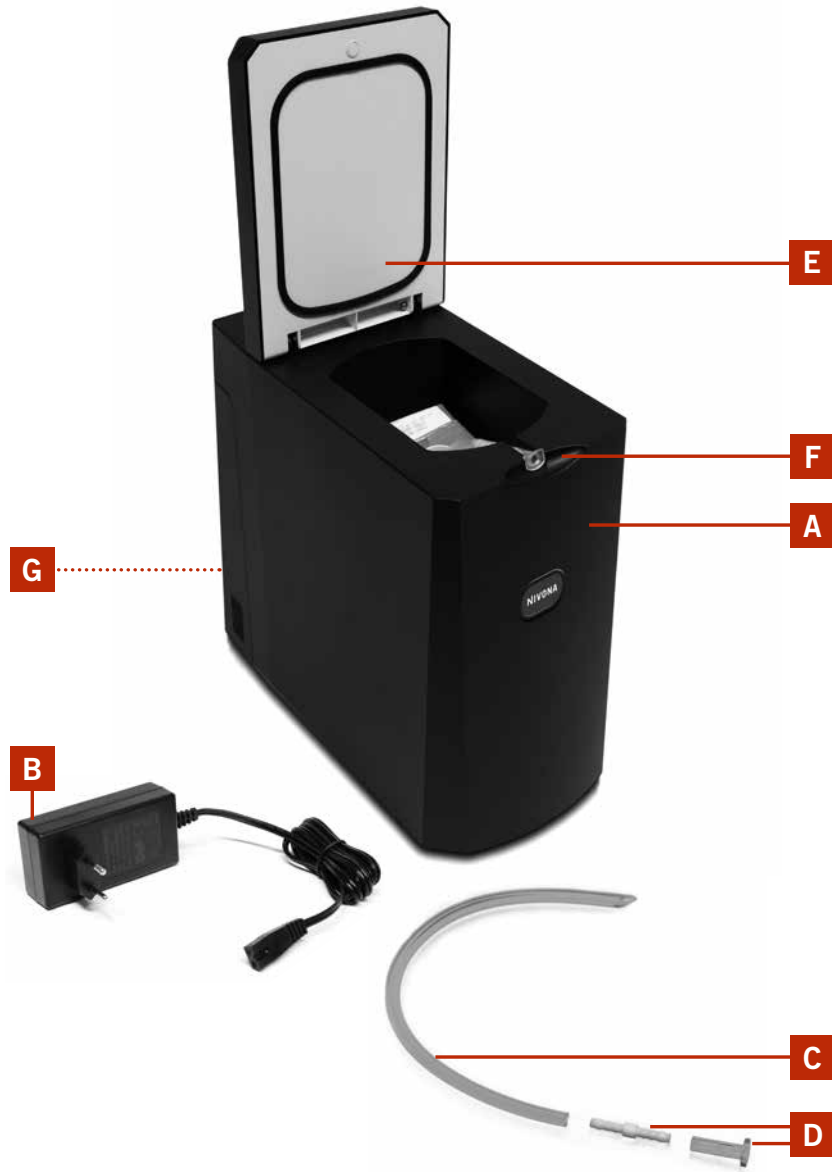
Manual and user tips



NIVONA

A passion for coffee.

1



- A Cooler
- B Power adapter
- C Silicone milk hose
- D Hose adapter
- E Lid of cooler
- F Gap for hose
- G switch
(on the backside)

Dear Customer

Congratulations and thank you very much for choosing a quality product by NIVONA. To best enjoy your new NIVONA appliance, please read this manual carefully and pay attention to the safety tips before first use. Please keep this manual safe. You can use it for reference and hand it over to a future owner should you ever wish to part with your NIVONA appliance. Enjoy your coffee and the top-quality appliance by NIVONA.

Purchased at

Location, date

| | |
|--|----|
| 1. SAFETY INSTRUCTIONS | 8 |
| 2. SCOPE OF DELIVERY | 9 |
| 3. INTENDED USE | 9 |
| 4. OPERATION | 9 |
| 5. CLEANING AND MAINTENANCE | 10 |
| 6. TROUBLE SHOOTING | 10 |
| 7. TECHNICAL DATA | 10 |
| 8. CUSTOMER SERVICE, GUARANTEE, ENVIRONMENTAL PROTECTION | 10 |

1. Safety instructions

- This appliance is only to be used together with an approved AC/DC power supply with input 100-240V 50/60Hz, output 12V SELV and fulfilling EN 60335 requirements.
- Never unplug the power supply on the connection cable.
- If the power supply is damaged, you have to use a new power supply from the same type with the same requirements.
- This appliance can be used by children aged from 8 years and above and persons with reduced physical, sensory or mental capabilities or lack of experience and knowledge if they have been given supervision or instruction concerning use of the appliance in a safe way and understand the hazards involved.
- Store and use the equipment out of the reach of children.
- In case the equipment is visibly damaged you are not allowed to put it into operation.
- Never open or repair the equipment yourself. Any repair of this equipment must be done by qualified persons only.
- Improper repair can create considerable safety risks.
- Switch off the equipment and remove the power plug from the power socket
 - before every cleaning and maintenance works
 - after each use
- Make sure that the vents remain unobstructed.
- Make sure that the heat generated in operation is sufficiently discharged. Make sure that the equipment is not too close to walls or objects, in order to ensure the circulation of the air.
- Compare the voltage values on the name plate with the existing energy supply.

- Make sure that the power feed and plug are dry, prior to operation.
- Never start operation with a damaged mains cable.
- Never start operation with wet hands.
- Never dip the equipment or power adapter into water.
- Do not use the equipment on hot surfaces.
- Do not place the equipment near an open flame.
- Protect the equipment, power supply unit and the cords against heat and moisture.

2. Scope of Delivery

See figure 1:

- A Cooler
- B Power adapter
- C Silicone milk hose
- D Hose adapter
- Operating instructions

3. Intended Use

The equipment serves to cool milk (exclusively in original packaging) for espresso and coffee machines. The inlet hoses of espresso and coffee machines can be led through the openings on the sides of the equipment.

The equipment is also suitable for cooling other foodstuffs in original packaging.

⚠ Attention: It is not allowed to pour liquids directly into the equipment.

⚠ Attention: Do not store explosive substances such as aerosol cans with a flammable propellant in this appliance.

NIVONA Apparate GmbH does not assume any guarantee for improper use.

4. Operation

Before starting operation of the new equipment you should clean it inside and outside with a moist cloth for reasons of hygiene (see also paragraph "cleaning and maintenance").

Please obey the information set out in the customer manuals of your coffee machine when using the milk cooler.

- Open the lid (E) of the NIVONA cooler (A) and put the milk to be cooled in the equipment in its original packaging.
- Insert the hose included in the delivery (C) in the milk (down to the bottom).
- Connect the silicone milk hose (C) of the NIVONA cooler with milk supply of your coffee machine. Please use the hose adapter (D).
- Put the hose into the gap provided for this purpose and close the lid.
- Connect the equipment to a mains socket by means of the mains adapter (B) and set the switch at the backside of the appliance (G) to position "1", the equipment starts the cooling process.
- If you wish to stop the cooling process you have to set the switch to position „0“.
- If you wish to stop operation of the equipment you have to switch off the equipment (position "0") and remove the plug from the socket.

5. Cleaning and Maintenance

→ Please remove the plug from the socket prior to each cleaning.

Please follow the cleaning instructions given in the customer manuals of your coffee machine.

⚠ Attention: Never clean the equipment under running water or even in rinse water.

⚠ Attention: Never use strong, abrasive cleaning agents or hard objects to clean the equipment, since they may damage the equipment.

→ Please clean the equipment every now and then inside and outside by means of a moist but not wet cloth.

→ Please clean the milk supply according to the instructions of the manufacturer of the coffee machine. If they are not available you will have to clean the hose daily.

⚠ Attention: Cleaning and user maintenance shall not be made by children without supervision.

6. Trouble shooting

This list is not exhaustive.

| Malfunction | Possible Causes | Solution to the problem |
|--|--|---|
| The equipment does not work – LED is not lit. | AC voltage socket without voltage. | → Try it with another socket. |
| | The power adapter is defective | → Replace the power adapter by an adapter of the same type and the same specifications. |
| The equipment is not cooling (plug is connected, LED is lit) | The interior fan or the cooling element are defective. | → The repair can only be performed by an authorized after-sales service company. |

7. Technical Data

| | |
|----------------------|---|
| Gross capacity | 1 l |
| Supply voltage | 100-240 V 50/60 Hz by means of power adapter |
| Power consumption | 23 W |
| Weight of the cooler | 2,6 kg |
| Dimensions | 150 x 315 x 270 mm |
| Temperature range | Cooling down to 22 °C below the ambient temperature but now lower than 3 °C |

8. Customer service, guarantee, environmental protection

Customer service

NIVONA products are manufactured to the highest quality standards. Should any question arise with regards to your appliance, please do not hesitate to write to us. Only with your active support will we be able to improve our products and further develop them, so that they will fully satisfy your demands.

Guarantee and customer service terms and conditions

Please find detailed information about guarantee and customer service terms and conditions in the accompanying document.

Disposal of your old appliance and packaging

Please keep the original packaging. It will serve as protection should you need to ship the appliance in the event of a customer service issue.

Electrical and electronic appliances often contain valuable, but sometimes also environmentally damaging material and should therefore not be disposed of as normal household waste. They may damage human health and harm the environment when handled or left among residual waste. Therefore please drop your old or irreparably damaged appliance at your local community waste collection/recycling centre.

Further information is available from the dealer where you bought the appliance, your town hall or waste collector.

NIVONA Apparate GmbH
Südwestpark 90
D-90449 Nürnberg
www.nivona.com
© 2017 by NIVONA